



CCH Taxpoint

Updated for Version
2010.12.001

August 2010 SP Release
Notes

Information
Fee Protection
Software
Magazines
Professional Development



■ Disclaimer

CCH Software has made every effort to ensure the accuracy and completeness of these Release Notes. However, CCH Software, its staff and agents will not be liable for any errors or omissions and use of the software is subject to the customer's licence with CCH Software. These Release Notes should not be relied upon as a detailed specification of the system or the software.

CCH Software may make changes to these Release Notes from time to time.

■ Copyright

These Release Notes may not be copied, altered, edited, disposed of or distributed without the prior consent of CCH Software. The content is confidential.

■ Trademark Rights

Microsoft, Windows, Windows NT, Windows for Workgroups, Windows 98, 2000, XP, MS-DOS and Microsoft Office, are either registered trademarks or trademarks of Microsoft Corporation. Novell and NetWare are trademarks of Novell Inc. Citrix MetaFrame is a registered trademark or trademarks of Citrix Systems, Inc., All rights reserved.

Viztopia is a registered trade mark of MYOB Technology Pty Ltd and is used by Wolters Kluwer (UK) Ltd under licence.

CCH Software
145 London Road
Kingston
Surrey KT2 6SR
UNITED KINGDOM

© 2008 MYOB Technology Pty Limited. Distributed under licence by Wolters Kluwer (UK) Limited (trading as CCH Software).

Contact Details

Website www.cch.co.uk/softwareproducts

Kingston

145 London Road
Kingston
Surrey KT2 6SR

Telephone: 0844 56 18181
Facsimile: 020 8547 2637
Email: cchsoftware@wolterskluwer.co.uk

Customer Care & Support

Telephone: 0844 56 18181
Email: cchsoftwaresupport@wolterskluwer.co.uk
Website: www.cch.co.uk/softwareproducts

Dublin

CCH Software Ireland Ltd
Unit F4
Riverview Business Park
Nangor Road
Dublin 12
Republic of Ireland

Telephone: +353 1 460 4718
Facsimile: +353 1 460 4544

Customer Care & Support

Telephone: +353 1 2780034

Contents

CCH Taxpoint August 2010 SP Release Notes

Contact Details	iii
Contents	ii
CCH Taxpoint 2010 SP Release Notes	1
Enhancements and New Features	2
Quality Improvements in Version 2010.12.001	2
R185 import from Personal Tax	2
SA100 - Excluded Cases Validation	2
SA109 - Remittance Basis of Taxation - Personal Allowances due under a Double Tax Agreement	4
Tax Computation - Reminder When an Underpayment is to be Collected Through PAYE	5
Tax Computation - Payments on Account	5
Pre-XML validations	5
Quality Improvements	6
5 April Letter (ITS/45124)	6
Bulk Filer (715479)	6
Clean Install - Security Database (Access) (ITS/45369)	6
Data List	6
Database Utility	6
E filer Transmission error (ITS/45159)	6
Help Sheet 304 (ITS/45253)	7
HMRC Help Menu (ITS/45374)	7
Printing 2006/07 Tax Returns (ITS/45119)	7
SA100 - Special Cases Validation (ITS/45117)	7
SA100 - Other Income - 2007/08 Tax Computation Missing Tax Paid (ITS/45199)	7
SA101 Page 4 Box 10 (ITS/45310)	7
SA103F - XML Validation Error When Description includes the word 'Short' (ITS/44363)	7
SA103F Other Income (ITS/44193)	7
SA104F Farmer's Averaging (741532)	8
SA105 Page 2 Not Printing on Oracle or SQL Databases (ITS/45123)	8
SA106 Page 5 Box 30 - Printing Issue (ITS/44142)	8



CCH Taxpoint June 2009 SP Release Notes

SA106 Page 6 Column F - Override for Expat Cases	8
SA106 - Foreign Property Printing (ITS/45185)	8
SA108 - 'Allocate Losses' Screen (795623/801249)	8
SA108 - Import from Gains (792620)	8
SA109 Page 1 Box 14 (ITS/43544)	9
SA800 - Business Module - Small pools allowance (775495)	9
SA800 Page 3 Box 3.25 (ITS/45753)	9
SA800 Page 6/7 Box 7 (ITS/45740)	9
SA800 - Partnership Send from Box 22 on Page 7 (Partnership Statement) where the PPA is not Used (701196)	10
SA801 - Box 1.33A Not Included in xml File for Online Filing (ITS/45593)	10
XML Validation - SA103F - 'Net Business Assets' Giving Error on Validation (ITS/43786)	10
XML Validation - SA800 - Box 3.73 is Zero (800751)	10
Known Issues	11
Areas Worth Noting	12
2009/10 HMRC Exchange Rates	12
Archive system	12
Editable HMRC Forms	12
SA100 and SA800 HMRC Help Files	12
SA100 and SA800 Forms	12



CCH Taxpoint 2010 SP Release Notes

The August 2010 Service Pack addresses quality issues raised by customers on the April compliance release of CCH Taxpoint.

It also includes the compliance changes required to process expatriate tax returns for 2009/10.

These notes contain details of the enhancements included in this Service Pack as well as providing a list of the Quality Improvements.

The Service Pack requires a Server and Client install. Please note that a database upgrade is required. See the Installation Instructions for further information.



Enhancements and New Features

Quality Improvements in Version 2010.12.001

ITS/45933 - Boxes 10 and 14 - Days disappearing from these fields

We have fixed the issue where data was present in Boxes 10 and 14 on the SA109, where the 'UK Visits' detail screen was not used to populate these boxes and upon opening the case the values in these boxes were being set to zero.

Online Filing -Error 6522

We have identified an issue with online filing where there are multiple chargeable event gains in Boxes 4, 6 or 8 on Page 1 of the SA101 or in Box 43 on Page 6 of the SA106, capital gains (in excess of the annual allowance) and no top slicing relief due. These were being rejected at the Gateway with a 6522 error. This has now been fixed.

New Exclusion ID 14

We have added in a test to capture the issue where Income Losses claimed in Box 14 on Page 1 of the SA108 were causing the case to be rejected at the Government Gateway. This is now flagged as an Excluded case where a paper return must be filed instead.

R185 import from Personal Tax

The R185 import from Personal Tax has been enhanced to include:

- 'Foreign income';
- 'Foreign estate income'; and
- 'Relief for tax already accounted for' on 'Income from foreign estates'.

SA100 - Excluded Cases Validation

We have added a new validation where the taxpayer is claiming the remittance basis of taxation, is due the personal allowances under a Double Tax Agreement and has ticked the 'Claim personal allowances by virtue of a Double Taxation Agreement' tick box on the 'Remittance Basis' tab of the 'Residence and Domicile' screen. See 'SA109 - Remittance Basis of Taxation - Personal Allowances due under a Double Tax Agreement' below.

In addition we have added validations for the following new Exclusions:

- The Tax Return contains Ministers of Religion Pages where the individual started or left their employment during the year and whose earnings are less than 8,500 but are earned at a rate greater than £8,500 p.a.; and



- The Tax Return contains current year Clogged Losses that are not claimed against the current year Clogged Gains.



SA109 - Remittance Basis of Taxation - Personal Allowances due under a Double Tax Agreement

Where the taxpayer is resident in the UK and claims the Remittance basis of taxation under s809B ITA 2007 then personal allowances are normally not due. However where the taxpayer is dual resident and under the Double Tax Agreements the taxpayer is regarded as resident in the other country then the Personal Allowance may be due (see Tax return: Residence, remittance basis etc. notes: Page RRN 21). To deal with this situation we have added a new tick box on the 'Remittance Basis' tab of the 'Residence and Domicile' screen with label 'Claim personal allowances by virtue of a Double Taxation Agreement':

The screenshot shows a software window titled "Residence and Domicile" with a blue header bar. Below the header are four tabs: "Residence Status", "Non-Residence", "Dual-Residence", and "Domicile". The "Remittance Basis" tab is selected and highlighted. The main content area contains a list of options with checkboxes and input fields:

- Claiming remittance basis of taxation
- Unremitted income and gains less than £2000
- UK resident for 7 or more of preceding 9 tax years
- Under 18 years old on 05 April 2010
- Amount of nominated income
- Amount of nominated capital gains
- Adjustments to payments on account
- Nominated income or gains remitted during 2009/2010
- Claim personal allowances by virtue of a Double Taxation Agreement

A red oval highlights the "Claim personal allowances by virtue of a Double Taxation Agreement" tick box. A "Close" button is located in the bottom right corner of the window.

This tick box is only activated if the 'Claiming remittance basis of taxation' tick box is ticked and the 'Unremitted income and gains less than £2,000' tick box is not ticked.

When the user ticks the tick box 'Claim personal allowances by virtue of a Double Taxation Agreement' then the system will give the Personal Allowances in the Tax Computation.

Please note that the HMRC calculation for online filing does not deal with this situation and the return will have to be filed by paper as an Excluded Case.



Tax Computation - Reminder When an Underpayment is to be Collected Through PAYE

Where the row 'Collected through PAYE code' is displayed on the Tax Computation then we now display the following note:

Note: You should confirm if HMRC will collect the underpayment through PAYE as an adjustment may be required to the payment due 31 January 2011

Tax Computation - Payments on Account

The payments on account section of the Tax Computation has been enhanced to take account of the following:

- Pension Savings Charges;
- State Pension Lump sum;
- Remittance Basis Charge; and
- Remittance Basis Charge adjustment (in Box 33 on Page 3 of the SA109).

Pre-XML validations

These have been enhanced to trap the situation where space(s) have been entered into the following fields (which would cause a schema validation error):

- "Local authority" on the "Blind person's Allowance" screen;
- "Bank or Building Society name" on the "Repayment Details" screen;
- "Account name" on the "Repayment Details" screen;
- "Employer's PAYE ref." on the "Earnings from Employment" screen;
- "Business name" on the "Income From Trade" screen;
- "Description" on the "Income From Trade" screen; and
- "Trade or professions" on the "Partnership Details" screen.



Quality Improvements

5 April Letter (ITS/45124)

It is now possible to run the 5th April letter and the user will no longer get the error message 'CCH Taxpoint. System Error. Failed to Open April 5th Letter interface'.

Bulk Filer (715479)

Previously where the Client ID for a case was greater than 32,767 and the user opened Bulk Filer they got an error message 'Failed to load Clients'. When they clicked on the 'OK' button they were taken into the application but the 'Complete Returns' tab didn't show any cases and the message 'Failed to load Clients' was repeated. Bulk Filer has been updated to deal with Client IDs greater than 32,767.

Clean Install - Security Database (Access) (ITS/45369)

A blank Security database is now being put down on a clean install.

Data List

The data list now displays the following:

- 'Allowable Loss' in the 'Disposal Details' section (ITS/45201); and
- 'Fuel for Vans' in the 'Income from Employment' section (this has been fixed for 2009/10 onwards) (ITS/43780).

Database Utility

The database utility program DbUtil2.exe has updated for the following:

- It now resets a flag in the database so that previously orphaned Capital Gains Enhancement records are visible in the case (ITS/43643); and
- To prevent the 'Gains on Disposals of Holdings in Offshore Funds' records from being orphaned (ITS/45101).

E filer Transmission error (ITS/45159)

Previously where there was an apostrophe in the 'Description' field of the 'XML Configuration' screen then when a case was transmitted the following error message appeared "The SQL statement contains an odd number of single-quote characters, ie they are not in pairs." and then Taxpoint crashed. This has now been fixed.



Help Sheet 304 (ITS/45253)

The logic on enabling/disabling the Boxes for Question 4 on Page 7 has been fixed.

HMRC Help Menu (ITS/45374)

The Help, HMRC Help menu now contain links for 2009/10 for both the HMRC Forms and the HMRC Help (Notes to the Tax Return and Supplementary Pages).

The HMRC Forms and Help can be downloaded from the CCH Support site.

Printing 2006/07 Tax Returns (ITS/45119)

It is now possible to print Tax Returns for 2006/07 and earlier years.

SA100 - Special Cases Validation (ITS/45117)

We have re-instated the special case validation where the repayment is claimed by cheque to a nominee on Page 5 of the SA100.

SA100 - Other Income - 2007/08 Tax Computation Missing Tax Paid (ITS/45199)

The tax paid on other income for 2007/08 now correctly appears in the Tax Computation.

SA101 Page 4 Box 10 (ITS/45310)

The amount in Box 10 on Page 4 of the SA101 (Additional information) is now being included in the Tax computation for 2007/08 and 2008/09.

SA103F - XML Validation Error When Description includes the word 'Short' (ITS/44363)

We have updated the xml validations so that an error will no longer be generated when the case is validated and the description of the trade included the word 'short'.

SA103F Other Income (ITS/44193)

Box 46 on Page 3 of the SA103F now displays the correct amount where there is an entry in Box 15 'Other Income' but not an entry in Box 14 'Turnover'.



SA104F Farmer's Averaging (741532)

Where this year's profit is less than the previous year's profit and the difference between them was between 25% and 30% then the adjustment should have been a negative amount. It was incorrectly being displayed as a positive amount. This has been fixed for 2009/10 onwards for new cases. For existing cases the un-tick and re-tick the 'Use farmer's averaging' tick box.

SA105 Page 2 Not Printing on Oracle or SQL Databases (ITS/45123)

We have fixed the printing so that Page 2 of the SA105 now prints on Oracle and SQL databases.

SA106 Page 5 Box 30 - Printing Issue (ITS/44142)

The figure in the hundreds of thousands field in Box 30 now prints out for all years.

SA106 Page 6 Column F - Override for Expat Cases

Where the user has entered an override in the field 'Override income on which foreign tax payable' on the 'Earnings from Employment' screen then instead of using this figure the system was adding the net benefits to arrive at the figure to use in Column F on Page 6 of the SA106 (and Box 19 on Page 6 of the SA100). This has now been fixed and Column F and Box 19 are now populated by the amount in the field 'Override income on which foreign tax payable'.

SA106 - Foreign Property Printing (ITS/45185)

We have fixed the issue where the first foreign property had four address lines and subsequent properties did not and this caused an error when printing.

SA108 - 'Allocate Losses' Screen (795623/801249)

The issue whereby the 'Allocate Losses' screen did not always display all the disposals entered has now been fixed.

SA108 - Import from Gains (792620)

We have fixed the issue whereby following the cross year copy of data of a case (with no land and property records) and import of data from CCH Gains there was missing data in the 'Capital Gains' data entry screen.

Where data had previously been imported before the release of this Service Pack then re-importing the data will refresh the entries on the 'Capital Gains' data entry screen.



SA109 Page 1 Box 14 (ITS/43544)

From 6 April 2008 where the date of arrival in the UK and date of departure from the UK are the same then the system no longer calculates the number of days in the UK to display in Box 14 as 1.

The system also no longer adds a day to the figure in Box 14 when days in the following tax year are entered in the 'UK Visits' screen supporting the 'Non-Residence' tab of the 'Residence and Domicile' screen.

SA800 - Business Module - Small pools allowance (775495)

The Business Module correctly calculated the small pools allowance. Now these figures are being correctly imported on to the 'Capital Allowances for period ending ...' data entry screen.

SA800 Page 3 Box 3.25 (ITS/45753)

Where expenses entered in the detail screen exceed £68,000 and the turnover is greater than £15M the expenses now correctly appear in Box 3.25 on Page 3 of the SA800.

SA800 Page 6/7 Box 7 (ITS/45740)

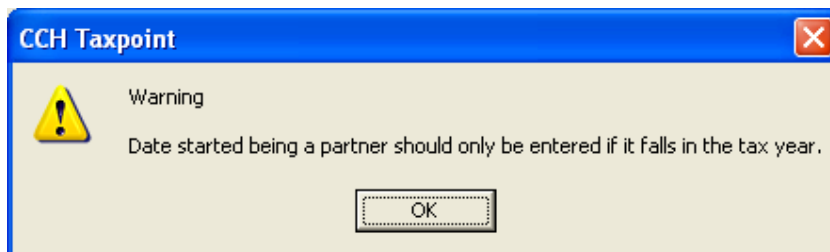
The SA800 changed for 2009/10 onwards and asks for the following dates:

- Date appointed as a partner
- Date ceased to be a partner

If they fall in the current year or the previous year. In earlier years these dates only needed to be provided if they were in the current tax year.

We have updated the validations in the 'Index Card' to permit the 'Date appointed' and the 'Date ceased' to be in both the current or previous tax year.

However, we did not update the validation messages, which still refer to the current year (see below):





SA800 - Partnership Send from Box 22 on Page 7 (Partnership Statement) where the PPA is not Used (701196)

Where the Partnership Statement was 'Full' and the PPA was not used to allocate the partnership profits among the partners and the data being sent to the Partner's record generated an SA104S then the amount in Box 22 on Page 7 (Partnership Statement) was not being transferred to the partner's record. This has now been rectified.

SA801 - Box 1.33A Not Included in xml File for Online Filing (ITS/45593)

The element (AnnualInvestmentAllowance) corresponding to Box 1.33A on Page 2 of the SA801 is now being written to the xml file for online filing.

XML Validation - SA103F - 'Net Business Assets' Giving Error on Validation (ITS/43786)

Where the net business assets are zero the system no longer gives an error when validating the case on the 'Client XML Administration' screen.

XML Validation - SA800 - Box 3.73 is Zero (800751)

Where Page 4 of the SA800 is populated and there is an entry in either Boxes 3.65, 3.69 or 3.72 and the 'Net business profit for tax purposes for this accounting period (put figure in brackets if a loss)' Box 3.73 is zero the system no longer gives an error when validating the case on the 'Client XML Administration' screen.



Known Issues

ITS Number	Description
ITS/43923	<p>SA101 Page 3 Box 4 Ticked Incorrectly</p> <p>Where a linked husband is claiming the MCA but passing the surplus MCA to his spouse, box 4 is being ticked incorrectly. This does not affect the tax liability or prevent the Tax Return being filed electronically.</p>
ITS/44141	<p>SA104 Send to Partners Box 26 is Zero</p> <p>If you resend a figure to Box 26 on the SA104F and the new figure for Box 26 is zero, the figures in boxes 28 and 33 are not refreshed but retain the original figures.</p> <p>The workaround is to refresh the figures in the 'Untaxed income at 20%' screen in the taxpayer's case.</p>
ITS/45488	<p>Spouse Link - HMRC District Code Non Access Databases</p> <p>If you select an HMRC district with more than five characters in the code and then link to a spouse, you will get an error message 'The statement has been terminated'.</p> <p>The workaround is to set up a five character code for that Tax District in the 'HMRC Districts' screen, accessed via Maintenance > HMRC Districts.</p>



Areas Worth Noting

2009/10 HMRC Exchange Rates

The 2009/10 HMRC Exchange Rates for expat cases are now available on the CCH Support site.

Archive system

Archive has been updated for 2009/10 and is available on the CCH Support site.

Editable HMRC Forms

A selection of editable HMRC forms is now available on the CCH Support site.

SA100 and SA800 HMRC Help Files

The HMRC Help for the SA100 and SA800 are now available on the CCH Support site.

SA100 and SA800 Forms

The HMRC Forms for the SA100 and SA800 are now available on the CCH Support site.